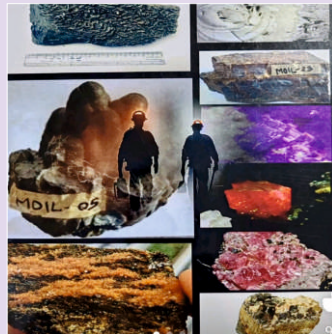




THE INDIAN MINING & ENGINEERING JOURNAL



The Indian Mining & Engineering Journal

(Incorporating Mineral Markets)

Volume : 63 Number 05-06 Year : 2024 Month : May-June

(PEER REVIEWED JOURNAL DEVOTED TO EARTH SCIENCES, MINING & ENGINEERING)

www.theimejournal.com

Publisher : Anita Pradhan, IME Publications

Editor-in-Chief: Prof. S.Jayanthu, National Mineral Awardee, Deptt. of Mining, NIT, Rourkela, Mob. 9938303259 , Email: sjyanthu@nitrkl.ac.in

Editor: S.K.Mahanta, Mob.: 9437002349, Email: sushantamahanta2349@gmail.com

EDITORIAL TEAM MEMBERS & REVIEWERS

Technical Editor (Hony.):

Prof. T.N. Singh, National Mineral Awardee,
(Deptt. of Earth Sciences, IIT- Bombay), Director, IIT, Patna
Prof. G. K. Pradhan, National Geoscience Awardee, Prof. of
Mining and Dean,
Faculty of Engineering & Technology, AKS University, Satna (M.P) ,
Mob.: 8120003355 Email: gkpradhan58@gmail.com

Principal Consulting Editor:

Prof. Manoj Pradhan, NIT, Raipur
Prof. Khanindra Pathak, National Geoscience Awardee, Deptt. of
Mining & Dean,
Indian Institute of Technology - Kharagpur

Consulting Editors:

Dr. D S Rao, CSIR-IMMT

Dr. K.C Brahma, Director, OMC Ltd.

Prof. N.R.Thote, Dept. of Mining, VNIT, Nagpur

Er. V. Srikant, Managing Director, Uttam Blastech, Hyderabad

Dr. M. Ramulu, National Geoscience Awardee, Sr. Principal
Scientist, CSIR-CIMFR, Nagpur

Dr. K Ram Chandar, NITK, Surathkal

Dr. B K Mishra, HOD Mining, AKS University, Satna

Overseas Consultants:

Japan: Prof. Hideki Shimada

Nordic Countries : Prof. Uday Kumar, Lulea Technical Univ.,
Sweden

Thailand: Dr. Thitisak Boonpromote, Asst. Prof., Head of Mining &
Petroleum Engineering Deptt., Chulalongkorn University,
Bangkok

Aim

The Indian Mining & Engineering Journal is in its 63rd year of Publication. This is published since 1961 in print is now available in open access electronic environment (due to Corona/Covid-19). The name of the journal was "Mineral markets" until 1963 and it has been changed to "The Indian Mining & Engineering Journal" since 1963. At regular interval the Journal in association with Indian mining sector, educational and research institutions, government departments/regulars hold technical deliberations to encourage the youth into mining research to contribute to its growth. The journal also holds every year Annual Awards functions to felicitate the eminent mining engineers, geo-scientists for their outstanding contributions.

Published every month, aims to disseminate original scientific studies which are conducted according to the scientific norms and publication ethics at national and international scale, to scientists, mining engineers (operating managers, researchers, scholars from University departments), the public; and thus to share scientific knowledge with society. The journal is in English. Since 2015 it had collaborated with AKS University, Satna(MP/India) as its knowledge partner.

Scope

The journal covers theoretical, experimental, and applied research articles (including case studies), which reflects the findings and results of an original research in the field of mining engineering; review articles, which assess, evaluates, and interprets the findings of a comprehensive review of sufficient number of scientific articles and summarize them at present information and technology level; technical notes, which may be defined as a short article that describes a novel methodology or technique; a case studies, which are based on the theoretical or real professional practice and involves systematic data collection and analysis.

To enable the advancement of information necessary to serve humanity with non-renewable mineral/coal resources with the perspective of sustainable mining principles, is the scope of the Journal. In this context, mine exploration, mineral resource modeling, mine surveying, mineral economics, conservation and feasibility, geostatistics, rock mechanics and geotechnics, rock fragmentation, diggability/drillability studies, blast free rock breaking techniques, underground and surface mining, mine design, support design in underground mines and tunnels, rock penetration and rock fragmentation, slope stability(bench & dump), mine production planning and pit optimization, mine health and safety management, mine ventilation, methane emission and drainage in underground coal mines, mineral processing and beneficiation, mineral processing, waste processing and management, mining law, environmental health and management, transportation, machinery and equipment selection and planning, coal gasification, marble technology, industrial minerals, space mining, are included in the journal content. IT had a significant role in mine planning, production, data acquisition, analyses of data etc to create a safe environment. Specialised topics like use of alternate fuel in higher HP engines (gas or hydrogen), manless or operator less dumper operation, use of drones etc are also included in the journal.

Submitted manuscripts are evaluated as per the details placed under POLICY guidelines.

Paper Submission:

Papers are invited for the peer-reviewed and indexed journals. The manuscripts should be submitted in MS Word, to the Editor-in-Chief through indianminingjournal61@hotmail.com

Paper Acceptance: The final decision on publication is made following the guidelines set as under

POLICIES

Special Issues: From time to time, Guest Editors are invited to produce Special Issues consisting of some articles grouped around a common theme. Proposals for Special Issues are received 3 months before preparation of the final volume.

Proofs:

Proofs will be sent to the corresponding author and should be returned with one week of receipt. Corrections should be restricted to typesetting errors; any other corrections may be charged to the authors. Authors are advised to check their proofs very carefully before return since the inclusion of late corrections cannot be acceptable. Corrected proofs are to be returned to the publishers.

Open Access

All articles published under open access can be accessed by anyone with internet connection. THE IME JOURNAL, strongly encourages the Open Access initiative. Abstracts and full texts of all articles published are freely accessible to everyone immediately after publication.

We permit anyone to copy, redistribute, remix, transmit, translate and adapt the work provided the original work and source is appropriately cited.

Publication Ethics

Introduction

Compliance with publication ethics ensures the integrity of scientific publishing and confidence in published articles. Therefore, THE IM&E JOURNAL expects all authors to adhere to ethical requirements in the preparation of their manuscript.

Plagiarism

The Oxford Webster Online dictionary defines plagiarizing as:

"Plagiarism is presenting someone else's work or ideas as your own, with or without their consent, by incorporating it into your work without full acknowledgement. All published and unpublished material, whether in manuscript, printed or electronic form, is covered under this definition".

THE IME JOURNAL considers plagiarism a serious offense. THE IME JOURNAL is committed to eliminating manuscripts with possible cases of plagiarism from its review and publication process. THE IME JOURNAL uses the iThenticate plagiarism detection application to check each manuscript for possible cases of plagiarism.

Plagiarism check is the first step in the manuscript review process. Manuscripts that are found to contain unacceptable level of similarity with other published works are immediately rejected. Please see review process below.

Submitted manuscripts should be the original works of the author(s).

Duplicate submissions

When an author submits the same or similar manuscripts to two different journals at the same time, with the same data in such a manner that there are no substantial differences in the manuscripts.

Fabrication and falsification of data

It is unethical to fabricate, manipulate or falsify data in a manuscript.

Citations manipulation

A manuscript should contain only relevant citations. Inclusion of citations that are not relevant to the work is strongly discouraged. Similarly, irrelevant self-citation to increase one's citation is unethical.

Peer Review

Introduction

The sole aim of a peer review system ensures the quality of a research article. THE IME JOURNAL employs a rigorous peer review system. All submitted manuscripts undergo a peer review process before publication.

Double Blind Peer Review

The review process is an important aspect of the publication process of an article. It enables authors to improve their manuscripts and aids editors in making decision on manuscripts. THE IME JOURNAL employs a double-blind peer review system.

A double-blind peer review system is an anonymous review system whereby the identity of the author(s) of a manuscript is concealed from the selected reviewers. All details that may enable a reviewer to identify the author(s) of a manuscript are removed from the manuscript before the manuscript is sent to the reviewer. Similarly, the reviewers' identities are also concealed from the author(s) when sending the reviewers' comments to the author(s).

THE IME JOURNAL considers the double-blind peer system as a more effective review system because it limits possible bias from either the selected reviewers or from authors.

The Peer Review Process

THE IME JOURNAL employs a three-stage review process – editorial office, external review and editors' decision.

The first stage of the review process takes place in the editorial office. On submission, a manuscript is reviewed to ensure that it meets the minimum requirements of the journal before it is sent to external reviewers. At this stage, the manuscript is reviewed for the following

- Possible plagiarism: The manuscript is evaluated to compare the level of similarity with other published works..
- Scope: After a manuscript has undergone similarity check and the level of similarity is judged to be appropriate, the content of the manuscript is checked to ensure that it fits within the scope of the journal selected by the author(s). In situations where the content of the manuscript does not fit the scope of the journal, the author's consent is sought for the manuscript to be transferred to a more suitable journal. A transferred manuscript does not automatically translate to an accepted manuscript in the receiving journal. The manuscript still undergoes the usual peer review and may be accepted or reject if it is not suitable.
- Recent references: THE IM&E JOURNAL encourage authors to cite more recent articles. Preferably, considerable number of the cited articles should be works that were published within the last five years. This is especially important for articles submitted to journals in the life sciences.
- English Language: THE IM&E JOURNAL currently publishes full text of articles only in English language. Abstracts may be translated to other languages and published alongside the English language abstract.
- Manuscripts are checked for the structure, organization, correctness and clarity of the language as it adheres to the journal's Instructions for Authors. The editorial office usually makes correction to minor grammatical errors in such a manner that it does not alter the manuscript. However, in situations where language is substantially difficult to comprehend, the manuscript is returned to the author to improve clarity of the language.

Manuscripts that fails in this first stage of the review process are returned to the author(s) for modification and resubmission. This first stage of the review is very important as it enables the author(s) improve the manuscript at an early stage. This first stage of the manuscript review is usually completed within a week.

Once a manuscript successfully completes the editorial office review process, it proceeds to the second stage. The second stage of the review process employs the double-blind review system. A minimum of two external reviewers are selected from our database, editorial board of the journal or other sources. These reviewers have expert knowledge of the subject area of the manuscript. The reviewers are invited to review the manuscript by sending them the abstract of the manuscript. Upon acceptance to review the manuscript, the full text of the manuscript is sent to the reviewers after the author(s) have been concealed.

Reviewers are required to evaluate the manuscripts and provide useful comments to enable the author(s) improve the quality of the manuscript. Reviewers also score the manuscript in terms of originality, contribution to the field, technical quality, clarity of presentation and depth of research. Finally, reviewers make one of the following suggestion about the manuscript;

- Requires minor corrections
- Requires moderate revision
- Requires major revision
- Not suitable for further processing. In this case, the reviewer provides specific reason(s) why the manuscript not be further processed.

It should be noted that though a reviewer may give a positive report on a particular manuscript, if another reviewer raises concerns that may fundamentally undermine the study and results the manuscript may be rejected.

Upon receipt of the reviewers' comments, the editorial office reviews the comment. If the two reviewers' comment have significantly different/or contradictory opinions about the same manuscripts, the manuscript is re-sent to a third reviewer. All reviewers' comments (including the third reviewers' comment where necessary) are thereafter sent to the author(s). The reviewers' identities are concealed from the author(s). The total time taken to complete the second stage of the manuscript review dependent on the availability of the reviewers. However, it is usually completed between one to four weeks.

Using the reviewers' comments, author(s) make corrections to the manuscript and submits a revised manuscript. Upon receipt of the revised submission, the manuscript undergoes the third and final stage of the review process. The original manuscript, the revised manuscript and all the reviewers' comments are sent to an editor of the journal. The editor reviews the manuscript and makes one the following decisions

- Accept as it is
- Accept with minor correction
- Requires major corrections
- Send revised manuscript for review again
- Reject

Manuscripts that are accepted as it is are scheduled for publication. Manuscripts that require corrections (either minor or major) are sent to the author(s) to affect the corrections suggested by the editor. After effecting the corrections, the editor reviews the manuscripts again before the manuscripts are accepted for publication. In some cases, the editor may require authors to make corrections a second time. In other cases, the editor may request for the revised manuscripts with (or without) the additional corrections to be sent to a specific reviewer who had earlier reviewed the manuscript before the manuscript can be accepted for publication

Manuscript Handling Fee & Waiver Policy

Journals like The IM&E Journal, are a self supporting organization and does not receive funding from any institution/government. Hence, the management of the Journal is solely financed by the handling fees received from authors. The manuscript handling fees are required to meet expenses such as salaries, internet services, webhosting, application development and support, electricity, rentals etc. Being an Open Access Publisher, The IM&E Journal does not receive payment for subscription as the journals are freely accessible over the internet.

Authors are required to pay a fair manuscript handling fee for the processing of their articles. However, there are no submission charges. Authors are required to make payment only after their manuscripts have been accepted for publication. See Manuscript Handling Fees for each journal below. We may also grants waivers to some corresponding authors. See Waiver Policy if you are eligible for a waiver. Journals Handling Fees – INR 6000/-

Waiver Policy

We at The IM&E Journal, understand that some institutions may have limited funding for their research activities. Thus, we have a generous waiver system of the manuscript handling fee when their researchers choose to publish their manuscripts in our journal. Our Mission is to encourage the dissemination of knowledge through the publication of high quality research papers. We thus do not want to put undue financial burden on researchers or their institutions. Hence, we have instituted the following waiver policy.

Authors from Low Income category may be granted up to 80% waiver.

Authors from Lower Middle-Income category may be granted up to 50% waiver.

To request a waiver, kindly send an application to our Editor-in-Chief. Waiver application should contain the manuscript details and state the reason for requesting a waiver.

Digital Archiving

The IM&E Journal is committed to the long-term preservation of its content. All articles published by the journal are preserved. In addition, journal encourage authors to archive the published version of their articles on their institutional repositories and web sites.

Copyright

We do not take ownership of the copyright of the published article. Our authors retain the copyright to their articles and may republish these articles as part of a book or other materials. However, it is expected that the authors adopt the following - Cite the original source of the publication when reusing the article and accept that the article in The IM&E Journal website. The article is published open access.

Published since 1961 by

The logo for IME Publications features the letters 'IME' in a stylized, bold, sans-serif font. The 'I' and 'M' are connected, and the 'E' is separate. To the right of 'IME' is the word 'PUBLICATIONS' in a smaller, all-caps, sans-serif font.

1457, Laxmisagarpatna, Bhubaneswar 751006, India
www.imejournal.com